

Jesús Peiró-Palomino
Emili Tortosa-Ausina

Can Trust Effects on Development be Generalized?

A Response by Quantile

Can Trust Effects on Development be Generalized?

A Response by Quantile

Jesús Peiró-Palomino¹

Emili Tortosa-Ausina^{1,2}

¹ *JAUME I UNIVERSITY*

² *THE VALENCIAN INSTITUTE OF ECONOMIC RESEARCH (Ivie)*

■ Abstract

While the beneficial effects of social trust on economic performance have been largely recognized, we analyze whether these effects can be generalized for economies at different stages of economic development. Contrary to previous studies on this issue based on average effects (mostly considering ordinary least squares estimations), we follow a quantile regression approach that enables us to capture heterogeneous effects of trust for different development levels. By considering data for 80 countries, and using trust indicators from five different waves of the World Values Survey (WVS), our results by quantile indicate that trust is not relevant for the poorest economies, showing the existence of a social poverty trap. In addition, results suggest that the impact of trust on income decreases as an economy becomes richer. This would suggest not only that the benefits of trust cannot be generalized for all countries, as some previous studies have proposed, but also that the extent of its implications are heavily dependent on the level of development.

■ Key words

GDP per capita, quantile regression, trust.

■ Resumen

Si bien los efectos beneficiosos de la confianza sobre el desarrollo económico han sido ya ampliamente contrastados, en este documento de trabajo se analiza si esos efectos pueden ser generalizados para economías que se encuentran en diferentes etapas de crecimiento económico. A diferencia de estudios previos en esta cuestión y que se han basado en efectos medios (mayoritariamente utilizando mínimos cuadrados ordinarios), en este documento se utiliza la regresión cuantil, la cual permite capturar efectos heterogéneos de la confianza para distintos niveles de desarrollo económico. Considerando datos para 80 países e indicadores de confianza procedentes de cinco oleadas de la *World Values Survey* (WVS), los resultados por cuantiles indican que la confianza no es relevante para las economías más pobres, hecho que pone en evidencia la existencia de una trampa social de la pobreza. Además, los resultados sugieren no solo que los efectos beneficiosos de la confianza no pueden generalizarse a todos los países, como algunos estudios previos sugieren, sino también que el alcance de sus implicaciones está fuertemente condicionado al nivel de desarrollo.

■ Palabras clave

Confianza, PIB per cápita, regresión cuantil.

Al publicar el presente documento de trabajo, la Fundación BBVA no asume responsabilidad alguna sobre su contenido ni sobre la inclusión en el mismo de documentos o información complementaria facilitada por los autores.

The BBVA Foundation's decision to publish this working paper does not imply any responsibility for its contents, or for the inclusion therein of any supplementary documents or information facilitated by the authors.

La serie Documentos de Trabajo tiene como objetivo la rápida difusión de los resultados del trabajo de investigación entre los especialistas de esa área, para promover así el intercambio de ideas y el debate académico. Cualquier comentario sobre sus contenidos será bien recibido y debe hacerse llegar directamente a los autores, cuyos datos de contacto aparecen en la *Nota sobre los autores*.

The Working Papers series is intended to disseminate research findings rapidly among specialists in the field concerned, in order to encourage the exchange of ideas and academic debate. Comments on this paper would be welcome and should be sent direct to the authors at the addresses provided in the About the authors section.

La serie Documentos de Trabajo, así como información sobre otras publicaciones de la Fundación BBVA, pueden consultarse en: <http://www.fbbva.es>

The Working Papers series, as well as information on other BBVA Foundation publications, can be found at: <http://www.fbbva.es>

Versión: Julio 2013

© Jesús Peiró-Palomino and Emili Tortosa-Ausina, 2013

© de esta edición / *of this edition*: Fundación BBVA, 2013

EDITA / PUBLISHED BY

Fundación BBVA, 2013

Plaza de San Nicolás, 4. 48005 Bilbao

1. Introduction

ONE of the most successful theories explaining the determinants of economic growth in relatively recent times is that considering the influence of social capital. In this field of research, scholars have attempted to ascertain whether the level of social capital in a given country or region is a key driver for economic development, among other related questions. Many studies were triggered by the findings of Putnam (1993), whose pioneering study concluded that social capital was a relevant determinant of the economic disparities across Italian regions. Following in Putnam's footsteps, contributions such as Knack and Keefer (1997), Zak and Knack (2001) or Beugelsdijk and Van Schaik (2005), and more recently, Dearmon and Grier (2009), Doh and McNeely (2011) or Horvath (2012), among others, have highlighted positive effects flowing from social capital to economic development, using different samples of countries or regions, and different time periods.

These widely accepted effects are not free from controversy, however, because the social capital definitions used differ from one study to another. Social capital is a multifaceted concept (Bjørnskov 2006) and includes trust, networks and associationism, as well as social norms. Therefore, the selection of an appropriate proxy for social capital becomes essential. In this study, we select the level of *trust*, since it is the most widely used indicator in this context. In addition, the trust indicator has been proved to be a reliable measure of honesty, generalized trust and trustworthiness, as shown in Knack and Keefer (1997) and Uslaner (2002). Finally, although we could have included several social capital indicators, an in-depth study should focus on just one aspect of social capital (Yamamura 2012).

Although academic progress in the field of research of trust and economic development is already substantial, more evidence is needed on some particular fronts. One of these fronts on which no consensus has yet been reached relates to determining whether trust effects are stronger in poor or in rich countries. This argument has become one of the most challenging issues in trust studies. This is highlighted by Knack and Keefer (1997), who included in their regression the interaction term $trust \times initial\ income$, finding a negative coefficient, which implies that the effects might be stronger for poorer economies. Other authors have followed different strategies. For instance, Dearmon and Grier (2009) split their sample into two subsamples based on the 25 (poorest) and 75 (richest) percentiles, carrying out Chow tests which showed no differential impacts. Ahlerup et al. (2009), controlling for the institutional environ-

ment, conclude that trust is more essential for the poorest economies, since these are characterized by weaker institutions and then interpersonal trust plays a major role. However, Putnam (1993, p.178) held the opposite opinion and argued—referring to social capital in a broader sense—that “the importance of social capital increases as development proceeds. This may help explain why the gap between the civic North and the uncivic South of Italy has widened over the last century”. Whatever the case, this discussion evidences scholars’ interest in highlighting *non-linearities* on the impact of trust.

Previous evidence on this issue is, however, based on *average effects*, mainly using ordinary least squares (OLS). Yet this approach, which generalizes the effect of trust on economic performance, suffers some limitations. On the one hand, in the large samples of countries on which studies are based, outlying observations are common. That may yield estimated coefficients heavily affected by these outliers, and therefore biased. Beugelsdijk et al. (2004) reported evidence suggesting that the robustness of the positive impact of trust is heavily affected by sample selection¹. On the other hand, even when outliers are identified and controlled for, trust may be affecting economic development with varying intensity depending on the country’s stage of development. Another likely scenario is that trust is relevant for some countries within a certain range of economic development, while for others its effects are not important at all.

The present contribution attempts to provide a response to these issues by using quantile regression, a methodology initially developed by Koenker and Bassett (1978). This technique, increasingly popular in the field of economic growth, as evidenced in recent studies by Mello and Perrelli (2003), Barreto and Hughes (2004) or Crespo-Cuaresma et al. (2011) (among others), enables us to quantify the different magnitudes of the effect of the covariates on the entire distribution of the variable of interest, in our case, the level of income. Different results by quantile would be suggesting *heterogeneous effects* of trust for different degrees of economic development, an unresolved question as argued in the preceding paragraphs. Additionally, as we will see later in the paper, quantile regression has other powerful advantages that are especially useful in this particular context. These include its efficiency when dealing

¹ The authors evaluate the robustness of Knack and Keefer’s (1997) and Zak and Knack’s (2001) results. They conclude that the inclusion of additional countries in the sample in Zak and Knack (2001), in particular countries with low trust levels, substantially increases the robustness of the findings—i.e. trust positively impacts economic growth.

with non-normal dependent variables, and when the analyst faces the difficulty of taking into account the whole set of variables that may be affecting economic performance.

In addition, previous studies on this issue are based on data provided by a single wave of the World Values Survey (WVS)², with a few exceptions such as Ahlerup et al. (2009) and Dearmon and Grier (2009, 2011), who considered several waves. Our study is based on the latter contribution, but substantially enlarges their sample by also considering data from the most recent WVS wave (2005-2007). Therefore, the contribution of the paper to the literature is twofold. First, it is innovative in both the sample considered—it is one of the largest in this context; and in the time span studied—it is to our knowledge one of the few considering the most recent wave from the WVS. Second, we use quantile regression to study the likely existence of heterogeneous effects between rich and poor countries. This twofold analysis might shed additional light on the true behavioral pattern showed by trust.

The paper is organized as follows. In Section 2 the causal links from trust to income are detailed. Section 3 is devoted to some insights on the quantile regression approach used in the paper. In Section 4 we present both the models to be estimated and the data, along with some descriptive statistics. Section 5 analyzes the results and, finally, Section 6 provides some concluding remarks.

2. The Links between Trust and Economic Development

A LARGE number of studies have evaluated the influence of trust on economic performance, as well as the transmission mechanisms of its influence, especially since the late nineties. The first insights, however, were introduced some years previously in sociological studies such as those by Arrow (1972) and Sen (1977), who held that the existence of trust in society plays an important role in the operation of the systems and that societies need some norms and rules of conduct to be viable. The mechanisms through which trust may affect economic development are multilateral —i.e. they follow multiple paths. In practical terms, however, this seriously complicates the task of isolating the different channels through which trust may affect economic development.

² See <http://www.worldvaluessurvey.org>.

The central point of the trust theory is the reduction of the transaction costs into economic operations. Putnam (1993) and Whiteley (2000) put forth that trust facilitates coordination and cooperation for mutual benefit, as well as solving problems of collective action and reducing the incentives for opportunism and egoism. In the same line, Knack and Keefer (1997) argued that trust reduces the cost of monitoring possible free riding behavior. Whiteley (2000) suggested that low-trust societies are characterized by strong regulations and bureaucratic procurements that impose costs and reduce efficiency. A sufficiently high stock of trust, therefore, might facilitate and lubricate complex transactions and improve their efficiency (Putnam 1993), saving operational costs and, ultimately, enhancing economic output (Knack and Keefer 1997). As Durlauf and Fafchamps (2005) noted, this might occur as a result of an increase in information flows, groups, flexibility and coordinated actions. A similar argument is put forward by Dearmon and Grier (2009), who concluded that trust mitigates information asymmetries between negotiating parties, and it may facilitate contracts and agreements.

Other authors, such as Ahlerup et al. (2009), related the role of trust to that of the institutions. They concluded that the potential effects of trust emerge in societies with weak institutions. Since the institutional framework in these societies cannot guarantee security in economic transactions, then trust plays an essential role. In countries with stronger and more reliable institutional frameworks, trust is not so relevant. Therefore, trust and institutions may be treated as substitutes. For Beugelsdijk and Van Schaik (2005), however, trust is indispensable for economic development even in the presence of well-functioning institutions since, they argue, despite having the appropriate institutional setting, some transactions would be almost impossible in the absence of trust. Recently, Bjørnskov and Méon (2013) suggested that trust positively affects institutional quality, and that translates into positive effects on income.

A variety of other activities, which at the same time positively impacts economic performance, might be influenced by trust —i.e. they would be *indirect transmission channels*. One of these activities is investment, as put forward by Knack and Keefer (1997), Zak and Knack (2001), Dearmon and Grier (2011) or Bjørnskov (2012), to name some of the most relevant contributions. Human capital is also one of these activities. Bjørnskov (2009; 2012) as well as Dearmon and Grier (2011) concluded that trust influences schooling and that in high-trust economies human capital might be more easily transmitted. Another activity positively influenced by trust is technological innovation. Akçomak and Ter Weel (2009) concluded that trust affects growth by fostering innovation for a sample of 102 European regions, while Miguélez et

al. (2011) found analogous results in the context of the Spanish regions. Trust might also foster participation in the credit market and financial development, as held by Guiso et al. (2004). For a sample of Italian regions these authors found that in areas where trust is high, households invest more in stock, use more checks, have higher access to institutional credit, and make less use of informal credit. Guiso et al. (2009) found that trust is also essential for trade, especially when the products are complex. Finally, Knack (2002) and Bjørnskov (2012) documented a positive influence from trust to better governance.

Trust effects, both in the way they reduce transaction costs and through impacts on the above-mentioned activities, tend to be self-reinforcing and cumulative (Putnam 1993), involving economies in a difficult-to-reverse virtuous circle of high —or low— trust stock. Despite the controversy generated on the true causality direction of these effects —i.e. likely endogeneity of trust, the recent study by Bjørnskov and Méon (2013) concluded that the stability of trust since the World War II corroborates its exogeneity. Causality running from economic development to trust is not plausible in the sense that the changing income levels over time are difficult to reconcile with the stability of trust.

3. A Brief Outline of Quantile Regression Methods

QUANTILE regression (QR) was initially developed by Koenker and Bassett (1978), although applications in the economic growth literature are relatively recent, mainly appearing in the last ten years. The numerous advantages provided by this technique have led to an increase in the number of contributions, including Mello and Perrelli (2003), Barreto and Hughes (2004), Osborne (2006) and Crespo-Cuaresma et al. (2011), among others, as commented on in the introduction. In the specific context of trust, applications are yet to come, and previous results have generally been reached by using the standard Ordinary Least Squares (OLS) estimations, which contribute to explain *average* effects on the variable of interest.

Although OLS provide a useful framework to start from, their use in this particular context can be troublesome for several reasons. For instance, the economic growth literature uses samples made up of very heterogeneous countries or regions, with large disparities in terms of income levels. The same practice is followed in the specific case of measuring trust effects on development, where the generalization of trust impacts based on average effects is common

practice³. In such a situation, with heavy-tailed distributions of the dependent variable, and thus favoring the existence of outliers, mean effects provided by OLS may be actually driven by these extreme observations. Furthermore, focusing only on the central tendency of the variable of interest (trust in our case) may be obscuring important information about its effects on other points of the distribution of the dependent variable (Maloney et al. 2004). In this sense, some authors such as Putnam (1993), Knack and Keefer (1997), or Dearmon and Grier (2009), to name a few, have previously been interested in disentangling such an important matter, but to date there is no widespread consensus.

In an attempt to provide an accurate response to the previous unresolved issues, we use quantile regression, which provides results not only on the *average* effect. Rather, it enables us to draw conclusions as to how the covariates impact on the entire distribution of the response variable. To this end, different quantiles (τ) are selected (for instance, selecting quantile $\tau = 0.5$ would refer to median regression, analogously to OLS when referring to average regression) and, therefore, different slopes are estimated for the different quantiles, highlighting the existence of *heterogeneous effects* and *non-linearities*.

Following Koenker and Bassett (1978), each β parameter is estimated by minimizing the absolute sum of the residuals —not the squared sum as in OLS. It is expressed as follows:

$$\min Q(\beta_\tau) = \sum_{i: y_i \geq x'_i \beta} \tau |y_i - x'_i \beta_\tau| + \sum_{i: y_i < x'_i \beta} (1 - \tau) |y_i - x'_i \beta_\tau| \quad (1)$$

where τ , which lies within the [0, 1] interval, represents a specific quantile.

The above function is not differentiable and therefore it cannot be optimized with the classical gradient methods. A linear programming problem is solved instead⁴. Each estimated $\hat{\beta}_\tau$ is asymptotically distributed as $N \rightarrow (0, \Omega_\tau)$, where Ω_τ is the variance covariance matrix of $\hat{\beta}_\tau$ for a given τ . The algorithm used to compute the fit is that proposed by Barrodale and

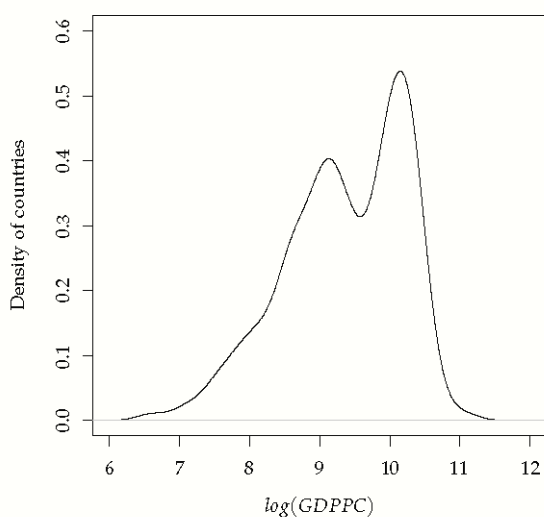
³ There are a few exceptions, like Beugelsdijk and Van Schaik (2005), who used a homogeneous sample of European regions. However, their choice was not based on avoiding large disparities in growth rates, but rather on the attempt to reduce to the minimum differences on how social capital is understood in the different regions. Nevertheless, Freitag and Bauer (2013) recently conclude that the WVS question about trusting others is similarly understood in culturally different countries, which would imply that the meaning of trust is relatively universal.

⁴ Further theoretical explanations on quantile regression fall outside the scope of this paper. Koenker (2005) provides an excellent discussion on the advanced statistical details concerning this technique.

Roberts (1974), explained in detail in Koenker and d’Orey (1987). Following Koenker (1994), we compute confidence bands by implementing the rank method, suitable for samples with fewer than 1,000 observations, which is precisely our case. However, Koenker and Hallock (2001, p.15) suggested that “the discrepancies among competing methods are slight, and inference for quantile regression is more robust than for most other forms of inference commonly encountered in econometrics.”

Among the advantages of quantile regression is its semi-parametric nature, in the sense that assumptions about the distribution of regression errors are avoided —i.e. it is more robust under heteroscedasticity (Cameron and Trivedi 2009, p. 211). Another advantage, underlined by Coad and Rao (2008), is the robustness of the quantile estimator under non-normal distributions of the response variable, whilst the OLS estimator loses efficiency in the same circumstances. As we note on in the next section, the distribution of the dependent variable employed in the present study depart from the Gaussian distribution (the reader might take a preliminary look at figure 1). Therefore, the use of the quantile estimator may give a more accurate result.

FIGURE 1: **Income distribution**



Note: Figure shows a Kernel density estimation. We chose a Gaussian kernel, and the bandwidths were implemented using the plug-in methods of Sheather and Jones (1991).

Additionally, Durlauf (2002) claimed that studies measuring trust effects are based on models where the number of control variables included, together with trust, is insufficient, lead-

ing to omitted variable biases⁵. As a result, it may cause an imprecise predictive relationship between the mean of the dependent variable distribution and the measured covariates. In such a case, quantile regression may generate useful predictive relationships with other parts of the response variable distribution (Cade and Noon 2003).

Following the latter authors, quantile regression is especially useful when there is more than one single factor affecting the response variable, and not all factors are measured, and also when the factors show heterogeneous effects. Therefore, in our context, quantile regression might provide useful insights in determining whether the effect of trust on development is linked to the degree of development of the country or, on the contrary, differences turn out not to be remarkable.

4. Model, Data and Descriptive Statistics

4.1. Model

In the particular context of economic growth, there is a relatively large number of models that differ according to the covariates they include. Brock and Durlauf (2001) referred to this fact as *theory-openendedness* in the sense that, whereas a lot of theories and models may be explaining economic growth, no one specific theory is more powerful than the others (Henderson et al. 2011)⁶. Bearing in mind the above arguments, we adopt a version of the widely-accepted neoclassical growth model developed by Mankiw et al. (1992), but expanded by including trust. This strategy will ease comparison with previous findings in the literature on trust and growth, which has traditionally relied on the neoclassical growth model.

However, while in the great majority of studies the dependent variable of the model is growth rates, in our case, since our aim is to evaluate the likely existence of differential impacts

⁵ As we explain in Section 4, the trust literature generally uses a variant of the neoclassical growth model, and control variables differ from one paper to another. Nevertheless, this is common practice in the entire economic growth literature and, although it is true that recent contributions are evaluating the effects on growth of larger sets of covariates, no consensus as to which model offers the best fit has yet been reached.

⁶ In their paper, Henderson et al. (2011) considers nonparametric techniques to handle non-linearities as well as selecting relevant variables, showing how relevant these techniques may be in growth empirics.

of trust depending on the level of development of the country, the response variable will be income levels. Neoclassical models in levels are relatively scarcer, but not completely unheard of. For instance, Mankiw et al. (1992) themselves, proposed a version of their model in levels. Osborne (2006) conducted his study by using both the growth rates and income levels versions of the neoclassical model. He suggested that while growth rates measure differences between slow- and fast-growing countries, income levels measure differences between poor and rich countries. Therefore, the version in levels of the model is a more appropriate strategy to deal with our research question. In the particular context of trust and development and closer to our research, Dearmon and Grier (2009) and Bjørnskov and Méon (2013) also based their analysis on models in levels. Therefore, following the above contributions, the dependent variable of the model to be estimated is *GDPPC*—i.e. the level of income per capita (in logs).

In order to capture the effects of trust and studying its robustness across different model specifications, we construct four models where *TRUST*—i.e. the trust indicator⁷, is always considered as a fixed regressor and other control variables commonly considered by the growth literature are included sequentially. In particular, *model 1* only includes as regressors an intercept and *TRUST*. *Model 2* incorporates the Solow variables⁸, including *GWOR*K, corresponding to the growth of the working population plus a fixed coefficient equal to 0.05⁹; *IGDP*, which is the rate of investment as a percentage of GDP; and *HK*, measuring the share of working population with secondary education. Additional controls are added in *model 3*. These include *OPENNESS*, which is the degree of trade openness (share of GDP) of the country; *POLITY*, which is a synthetic indicator of the democratic degree of political institutions; *ETHNIC*, which captures the degree of ethnic fractionalization; and *AFRICA*, a binary variable equal to 1 for African countries and 0 otherwise. Finally, *model 4*, the most comprehensive model, adds temporal controls, t_w , to model 3. Following the recommendation of Dearmon and Grier (2009), fixed effects by country are not included because, as in their case, only one observation is available for

⁷ Detailed information on how this variable is constructed is given in Section 4.2.

⁸ See Solow (1957) and Henderson et al. (2011) for an example of the use of this label for referring to the baseline variables of the neoclassical growth model. Note that when the model is expressed in levels the variable controlling for the initial level of income is omitted (see the version in levels of the model in Mankiw et al. (1992) and Osborne (2006)).

⁹ Following Mankiw et al. (1992), this fixed coefficient represents technological advance and depreciation.

some of the countries —our database is actually constructed by pooling all the data, as it will be shown in Section 4.2. Data are aggregated in the periods for which information on *TRUST* is available. Therefore, the full model (corresponding to model 4) to be estimated corresponds to the following expression:

$$GDPPC_w = \beta_0 + \beta_1 TRUST_w + \beta_2 GWORK_w + \beta_3 IGDP_w + \beta_4 HK_w + \beta_5 OPENNESS_w + \beta_6 POLITY_w + \beta_7 ETHNIC_w + \beta_8 AFRICA + \beta_9 t_w + \varepsilon_w \quad (2)$$

where the subindex w represents the time period.

4.2. Data and descriptive statistics

Data on trust are available in the World Values Survey (WVS). We take data from five different waves corresponding to the periods 1981-1984, 1989-1993, 1994-1998, 1999-2004 and 2005-2007. Trust is measured from responses to the following question: “Generally speaking, would you say that most people can be trusted, or that you cannot be too careful in dealing with people?”. Two possible answers are provided, namely: (i) “most people can be trusted”; and (ii) “can’t be too careful”. An index of trust is then constructed from the percentage of respondents who answered “most people can be trusted”. The rest of the control variables come from different databases: the Penn World Tables (PWT 6.3)¹⁰, the Barro-Lee education database (BL)¹¹, the World Development Indicators (WDI)¹², the Polity IV database¹³, and the Quality of Government database¹⁴. A full description of the variables and their sources is available in table 2.

When studying economic growth over long periods, as in our case, data are generally aggregated in subperiods of four or five years, as suggested by Islam (1995). Nevertheless, whereas the PTW, the WDI, the Polity IV and the Quality of Government databases all provide

¹⁰ See <http://pwt.econ.upenn.edu/>.

¹¹ See <http://www.barrolee.com/data/dataexp.htm>.

¹² See <http://www.worldbank.org/>.

¹³ See <http://www.systemicpeace.org/polity/polity4.htm/>.

¹⁴ See Teorell et al. (2011).

yearly data and BL every five years, which would allow us to follow that strategy, WVS only provides data for the periods detailed above. Therefore, we aggregate the data for these five subperiods, following Dearmon and Grier (2009), although their study does not include the latest WVS wave.

One drawback with the WVS data concerns the different number of countries for which data are available in each wave. For example, the first wave (1981-1984) offers only data for only 19 countries, whereas the most recent wave (2005-2007) provides information for 49 countries. For this reason some countries have five observations, whilst for others only one is available. We take the maximum number of observations, after merging the WVS data with the rest of the databases. In some cases, although data on trust are available, data for the rest of covariates are not. This merger yields 80 countries and 208 pooled observations (see table 1). Hence, we expand Dearmon and Grier's (2009) sample with 89 additional observations. Other samples in this context are considerably smaller; for instance, Knack and Keefer (1997) (29 countries), Whiteley (2000) (34 countries) or Beugelsdijk and Van Schaik (2005) (54 regions). To our knowledge, our sample is the largest to date in the literature analyzing the effects of trust on economic development.

Some descriptive statistics are provided in table 3, which shows important disparities. Focusing on our variable of interest —i.e. *TRUST*— the comparison between its maximum value, 74%, and its minimum, 2.8%, shows how significant the differences really are. However, such notable disparities are not exclusively confined to *TRUST*; the other variables under study also present remarkable differences, as can be seen from table 3.

TABLE 1: **Sample description**

Country	World Values Survey waves				
	Wave 1 (1981-1984)	Wave 2 (1989-1993)	Wave 3 (1994-1998)	Wave 4 (1999-2004)	Wave 5 (2005-2007)
Albania*			x	x	
Algeria				x	
Argentina	x	x	x	x	x
Armenia*			x		
Australia	x		x		x
Austria		x		x	
Bangladesh			x	x	
Belgium	x	x		x	
Brazil		x	x		x
Bulgaria*		x	x	x	x
Canada	x	x		x	x
Chile		x	x	x	x
China		x	x	x	x

TABLE 1 (cont.): Sample description

Country	World Values Survey waves				
	Wave 1 (1981-1984)	Wave 2 (1989-1993)	Wave 3 (1994-1998)	Wave 4 (1999-2004)	Wave 5 (2005-2007)
Colombia			x		x
Croatia*		x	x		
Cyprus*					x
Czech Rep.*		x	x	x	
Denmark	x	x		x	
Dominican Rep.			x		
Egypt				x	x
El Salvador			x		
Estonia*		x	x	x	
Finland		x	x	x	x
France	x	x		x	x
Germany*		x	x	x	x
Ghana*					x
Greece				x	
Guatemala*					x
Hungary	x	x	x	x	
Iceland	x	x		x	
India		x	x	x	x
Indonesia				x	x
Iran				x	x
Iraq*				x	x
Ireland	x	x		x	
Israel				x	
Italy	x	x		x	x
Japan	x	x	x	x	x
Jordan				x	x
Korea, Rep. of	x	x	x	x	x
Latvia*			x	x	
Lithuania*			x	x	
Luxembourg*				x	
Malaysia*					x
Mali*					x
Malta*	x	x		x	
Mexico		x	x	x	x
Moldavia*			x	x	x
Morocco*				x	x
Netherlands	x	x		x	x
New Zealand			x		x
Norway	x	x	x		x
Pakistan			x	x	
Peru			x	x	x
Philippines			x	x	
Poland		x	x	x	x
Portugal		x		x	
Romania*		x	x	x	x
Russia*			x	x	x
Saudi Arabia*				x	
Singapore				x	
Slovak Rep.*			x	x	
Slovenia*			x		x
South Africa		x	x	x	x
Spain	x	x	x	x	x
Sweden	x	x	x	x	x

TABLE 1 (cont.): Sample description

Country	World Values Survey waves				
	Wave 1 (1981-1984)	Wave 2 (1989-1993)	Wave 3 (1994-1998)	Wave 4 (1999-2004)	Wave 5 (2005-2007)
Switzerland		x	x		x
Tanzania				x	
Thailand*					x
Trinidad & Tobago*					x
Turkey		x	x	x	x
Uganda				x	
Ukraine*			x		x
United Kingdom	x	x	x	x	x
United States	x	x	x	x	x
Uruguay			x		x
Venezuela			x	x	
Vietnam*				x	x
Zambia*					x
Zimbabwe				x	
# of countries	19	36	45	59	49

* Denotes countries not included in Dearmon and Grier (2009).

Figure 1 shows the density estimated via kernel smoothing of the dependent variable, *GDPPC* (in logs). As briefly introduced in Section 3, the density deviates from the Gaussian distribution. Barro and Sala-i-Martin (1995) and Mello and Perrelli (2003) argued that distributions of the average GDP per capita are usually strongly skewed. In our case, as shown in figure 1, the distribution presents long tails, deviating from normality¹⁵. Therefore, the use of quantile regression might be appropriate in this context, since we estimate the effects of trust for a sample with a remarkable level of heterogeneity, where data from countries such as the United States, Germany, Japan or El Salvador and Zimbabwe, are pooled.

¹⁵ Normality was formally tested by using Shapiro and Wilk's (1965) and Doornik and Hansen's (2008) tests, and in both cases the normality assumption was strongly rejected. Results from these tests are available from the authors upon request.

TABLE 2: Variables and sources

Variable	Description	Source
<i>GDPPC</i>	GDP per capita (in logs) ^a	Penn World Tables 6.3
<i>TRUST</i>	Share of respondents who trust each other	World Values Survey
<i>GWORK</i>	Growth of working population	World Development Indicators
<i>IGDP</i>	Investment (as a share of GDP)	Penn World Tables 6.3
<i>HK</i>	Share of working population with secondary studies	Barro-Lee Educational Attainment Dataset (2010)
<i>OPENNESS</i>	Degree of openness (as a share of GDP)	Penn World Tables 6.3
<i>POLITY</i>	Polity 2 (0 – 20) ^b	Polity IV Dataset
<i>ETHNIC</i>	Ethnic fractionalization (0 – 1) ^c	Teorell et al. (2011)
<i>AFRICA</i>	1=African country; 0=otherwise	–
t_w	Temporal dummy for each period ^d	–

^a Base year: \$US of 2005.

^b Higher values correspond to more democratic institutions.

^c Higher values correspond to more fractionalization.

^d The w subscript denotes the time period.

TABLE 3: Descriptive statistics

Variable	Obs.	Mean	S. d.	Min.	1st quartile	Median	3rd quartile	Max.
<i>GDPPC</i>	208	15,691.83	11,015.73	730.368	6,324.81	12,402.87	24,299.99	64,467.18
<i>TRUST</i>	208	0.305	0.157	0.028	0.188	0.277	0.411	0.742
<i>GWORK</i>	208	0.061	0.011	0.035	0.053	0.060	0.069	0.098
<i>IGDP</i>	208	0.244	0.079	0.044	0.188	0.247	0.298	0.493
<i>HK</i>	208	0.457	0.157	0.045	0.357	0.461	0.564	0.804
<i>OPENNESS</i>	208	0.694	0.446	0.124	0.403	0.586	0.848	3.662
<i>POLITY</i> ^a	199	16.710	5.080	0.000	16.000	19.000	20.000	20.000
<i>ETHNIC</i>	208	0.316	0.222	0.012	0.118	0.255	0.499	0.930

* Information is missing for Iceland, Iraq, Malta and Luxembourg.

5. Results

5.1. OLS regressions

In order to evaluate the relationship between trust (*TRUST*) and income per capita (*GDPPC*) we start by performing OLS estimations for the different models specified in Section 4. Table 4 provides the results for all four models. The results for model 1, where only an intercept and *TRUST* are considered as regressors, suggest a positive and highly

significant effect for *TRUST*. The magnitude of this effect, however, decreases when other variables are included in the more comprehensive models (models 2, 3 and 4). This is an expected result, in the sense that in the first model the *TRUST* coefficient might be upward biased, since the model is disregarding other determinants of the income level. Nevertheless, the estimated coefficient never loses its significance, even after controlling for the Solow variables (model 2) and the remaining variables considered in models 3 and 4, the last including time effects.

Therefore, trust has a significant influence on income per capita and these results might be supporting previous findings in the literature such as those by Knack and Keefer (1997), Zak and Knack (2001) and Horvath (2012). Yet comparisons should be made with caution, since as commented on in Section 4.1, most studies in this context use growth rates as a measure of economic performance, and not income levels, as we do. For a direct comparison with models in levels we focus on Dearmon and Grier (2009), who found analogous results for a sample of 51 countries, and recently Bjørnskov and Méon (2013), whose results are also in consonance with those found in this study. Therefore, our results add further evidence on this issue. Using a larger sample of countries and the most recent available data for trust, results hold.

The other variables included in the different specifications —i.e. models 2, 3 and 4— show in most cases the expected signs, but these are not always significant. While the investment variable (*IGDP*) is positive and significant for all three models where it is included (models 2, 3 and 4), the growth of working population (*GWORK*) and the variable controlling for education (*HK*) are significant in model 2 but lose significance when additional controls are included. The influence of government institutions (*POLITY*) seems to be relevant for income levels, while the degree of openness (*OPENNESS*), ethnic fractionalization (*ETHNIC*), and perhaps surprisingly, the dummy variable (*AFRICA*) are non-significant.

TABLE 4: Determinants of GDP per capita: OLS regressions

Covariates	Dependent variable: <i>GDPPC</i> (in logs)			
	Model 1 ^{a,c}	Model 2 ^{a,c}	Model 3 ^{b,c}	Model 4 ^{b,c}
<i>(Intercept)</i>	8.674*** (0.119)	8.350*** (0.439)	6.789*** (0.476)	7.131*** (0.477)
<i>TRUST</i>	2.243*** (0.347)	1.451*** (0.300)	1.556*** (0.257)	1.448*** (0.266)
<i>GWORK</i>		-13.195*** (4.838)	-3.168 (5.741)	-3.928 (5.770)
<i>IGDP</i>		4.361*** (0.620)	3.726*** (0.746)	3.580*** (0.739)
<i>HK</i>		0.665** (0.339)	0.336 (0.350)	0.346 (0.360)
<i>OPENNESS</i>			0.161 (0.150)	0.160 (0.160)
<i>POLITY</i>			0.071*** (0.012)	0.070*** (0.011)
<i>ETHNIC</i>			-0.264 (0.259)	-0.259 (0.255)
<i>AFRICA</i>			0.111 (0.244)	0.076 (0.251)
Time controls	No	No	No	Yes
R^2 (adjusted)	0.164	0.422	0.578	0.590
F_{STAT}	41.740***	38.830***	32.470***	22.370***
χ^2 Cook-Weiseberg ^d	0.004	0.106	28.088***	26.152***

^a Standard errors are in parentheses.

^b Robust standard errors are in parentheses.

^c *, ** and *** denote significance at 10%, 5%, and 1% significance levels, respectively.

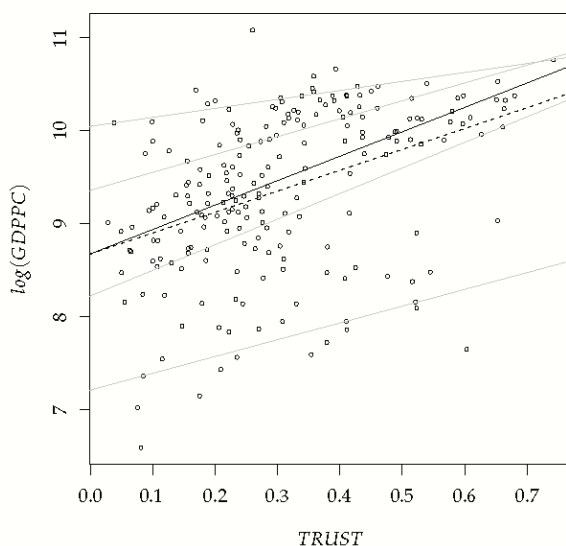
^d Cook-Weiseberg test for heteroscedasticity. Under the null hypothesis the variance of the disturbances remains constant.

5.2. Quantile regressions

Although OLS regressions provide useful insights, as commented on throughout the study, they focus on the *average effect*. Therefore, this strategy sheds no light on the effects in other particular parts of the response variable. Effects of trust may vary, which is actually the case, across quantiles, implying differing behaviors depending on the country's level of income. Figure 2 plots different fits for model 1 (where *TRUST* is included as a single regressor together with an intercept). The plot is very illustrative, since it displays the results for OLS estimation, the median (*median regression*), as well as some percentiles (additional details are available in the footnote of the figure). Although we cannot draw definitive conclusions from this analysis (control variables are not included, and inference could be seriously affected by

omitted variable biases), its usage is, at first sight, interesting. It clearly shows different slopes for *TRUST*, depending on the percentile. Such a finding implies that generalization of the OLS results should be, at the very least, questioned.

FIGURE 2: **Quantile slopes for *TRUST***



Note: The plot shows a scatterplot of the data on *GDPPC* (in logs) vs. *TRUST*. Superimposed on the plot are the (0.05, 0.25, 0.75, 0.95) quantile regression lines in grey (solid), the median fit (quantile 0.50) in black (solid), and the OLS estimation in black (dashed). The above fits are based on a simple regression where *GDPPC* (in logs) is the dependent variable, and *TRUST* and an intercept, the regressors.

Therefore, in this section we perform quantile regressions for the four models. Results for the main percentiles for the different models are available in tables 5, 6, 7 and 8, while table 9 provides ANOVA tests for the equality of the slopes of *TRUST* for the different quantile estimates. More detailed and accurate results are displayed in figure 3, where the estimates for the 100 percentiles are graphically displayed (percentile regression). The solid red line, constant across quantiles, corresponds to the OLS estimation. The dashed red lines are 90% confidence intervals. The dotted black line reflects the results by quantile —i.e. different percentiles— and the shaded area, the associated 90% confidence intervals. Another solid black line set at zero helps us to see at a glance when a variable is significant or not— depending on whether the zero value of the *OY* axis overlaps or not with the confidence bands. Note that, supporting the results found in Section 5.1, the bands for OLS do not overlap the zero in any of the models, and therefore *TRUST* is significant on average.

TABLE 5: Determinants of GDP per capita: quantile regression (Model 1)

Covariates	Dependent variable: <i>GDPPC</i> (in logs)				
	Quantile (τ)				
	$\tau = 0.05^a$	$\tau = 0.25^a$	$\tau = 0.50^a$	$\tau = 0.75^a$	$\tau = 0.95^a$
<i>(Intercept)</i>	7.210 (6.686, 7.705)	8.221 (7.945, 8.391)	8.672 (8.510, 8.844)	9.355 (8.930, 9.611)	10.042 (9.915, 10.224)
<i>TRUST</i>	1.801 (-0.000, 3.076)	2.745 (0.601, 3.511)	2.620 (2.223, 2.961)	1.919 (1.325, 3.360)	0.964 (0.610, 1.948)

^a According to Figure 3, confidence bands (90%) are in parentheses. They are computed using the rank method, suitable for samples with fewer than 1,000 observations (see Koenker, 1994). In bold are those bands not including the zero—i.e. the estimated coefficient (also in bold) is significant for this quantile.

When the quantile estimation is performed, a common pattern for *TRUST* is observed for all four models. Note that the 90% confidence bands overlap the zero line for the poorest countries (approximately those in the range of percentiles 0-15, depending on the model). Such a pattern suggests that *TRUST* is non-significant for these countries. However, when a country reaches a certain level of development, the impact of *TRUST* on income becomes highly significant (from percentile 15 approximately, slightly variant across models) and furthermore, its contribution to income is maximum. After that, the coefficient begins to decrease progressively until the highest quantiles, where there is a rebound (for models 2, 3 and 4), although the confidence bands indicate that such a rebound is no longer significant after the 95 percentile—i.e. the very richest countries. Note that the pattern remains essentially unaltered in the different model specifications, which might suggest that, even when controlling for multiple income determinants, results for *TRUST* are relatively robust. ANOVA tests provided in table 9 corroborate that the magnitude of the coefficients actually differs across quantiles.

TABLE 6: Determinants of GDP per capita: quantile regression (Model 2)

Covariates	Dependent variable: <i>GDPPC</i> (in logs)				
	Quantile (τ)				
	$\tau = 0.05^a$	$\tau = 0.25^a$	$\tau = 0.50^a$	$\tau = 0.75^a$	$\tau = 0.95^a$
<i>(Intercept)</i>	8.078 (6.811, 9.170)	7.973 (6.845, 9.660)	7.976 (7.530, 8.806)	8.180 (7.580, 9.250)	8.116 (6.540, 9.445)
<i>TRUST</i>	0.046 (-1.762, 2.403)	1.781 (0.934, 2.779)	2.067 (1.565, 2.257)	1.061 (0.880, 1.586)	1.099 (0.195, 2.316)
<i>GWORK</i>	-16.154 (-32.632, -3.777)	-16.453 (-32.337, -4.318)	-11.071 (-20.492, -2.351)	-1.919 (-14.993, 7.118)	3.113 (-10.320, 19.206)
<i>IGDP</i>	4.372 (2.720, 4.559)	5.515 (3.272, 6.132)	4.984 (2.863, 6.141)	4.463 (3.380, 4.914)	3.997 (1.802, 8.505)
<i>HK</i>	0.098 (-0.801, 1.396)	0.293 (-0.791, 1.444)	0.597 (0.262, 0.971)	0.787 (0.382, 1.466)	1.259 (0.228, 2.599)

^a According to Figure 3, confidence bands (90%) are in parentheses. They are computed using the rank method, suitable for samples with less than 1,000 observations (see Koenker, 1994). In bold are those bands not including the zero—i.e. the estimated coefficient (also in bold) is significant for this quantile.

TABLE 7: Determinants of GDP per capita: quantile regression (Model 3)

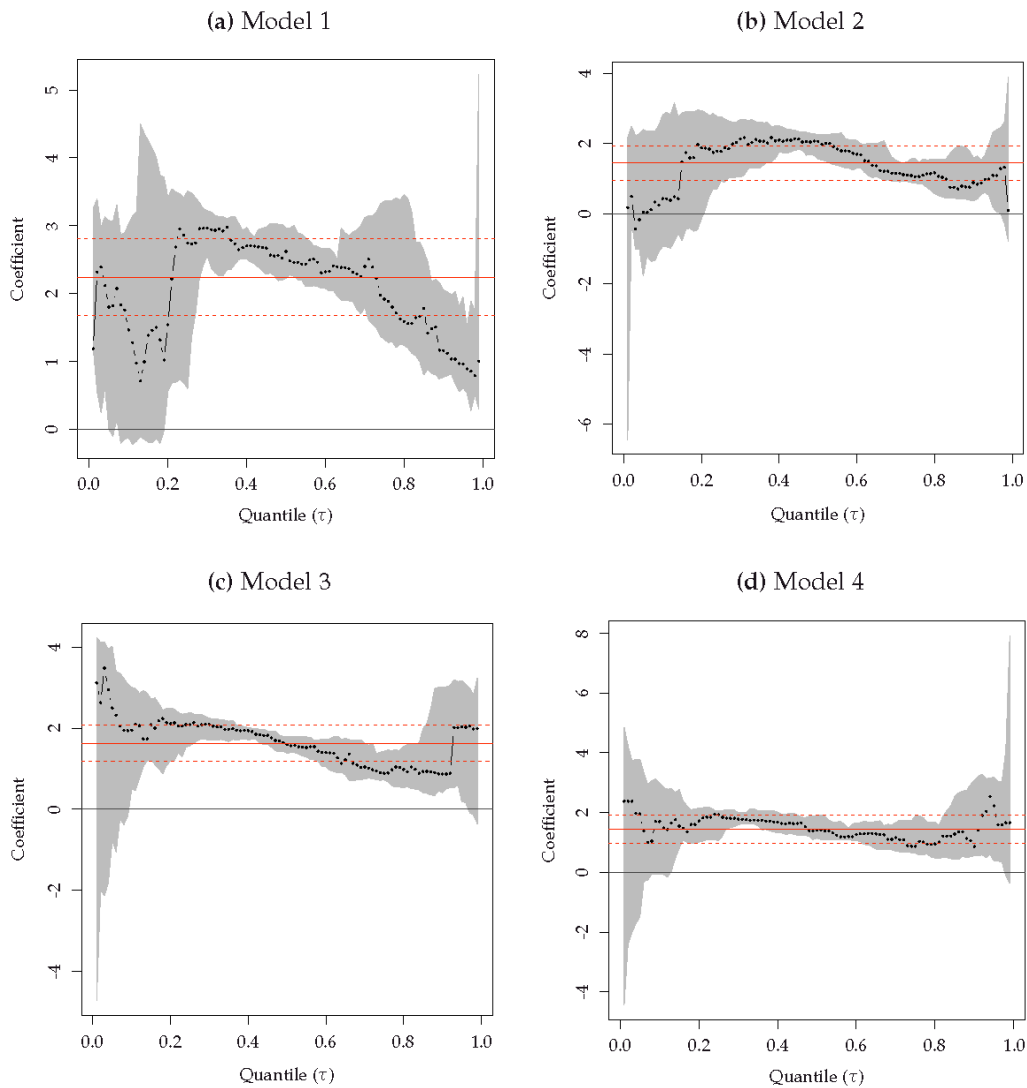
Covariates	Dependent variable: <i>GDPPC</i> (in logs)				
	Quantile (τ)				
	$\tau = 0.05^a$	$\tau = 0.25^a$	$\tau = 0.50^a$	$\tau = 0.75^a$	$\tau = 0.95^a$
<i>(Intercept)</i>	6.304 (3.844, 7.647)	5.788 (5.332, 6.820)	6.769 (5.327, 7.425)	7.373 (6.985, 7.954)	6.215 (5.733, 9.137)
<i>TRUST</i>	1.976 (-0.287, 3.439)	1.853 (1.284, 2.247)	1.559 (1.244, 1.789)	0.909 (0.686, 1.409)	2.130 (0.498, 3.126)
<i>GWORK</i>	-1.695 (-2.785, 2.319)	-0.0780 (-7.774, 6.218)	-2.966 (-13.578, 10.417)	-0.989 (-10.004, 8.265)	20.240 (-7.514, 31.661)
<i>IGDP</i>	4.279 (3.523, 4.928)	3.976 (2.852, 5.310)	3.100 (2.208, 4.133)	3.307 (1.980, 4.211)	3.702 (0.527, 7.534)
<i>HK</i>	-0.417 (-1.751, 1.102)	0.272 (-0.123, 0.540)	0.572 (-0.260, 0.682)	0.399 (-0.107, 1.221)	1.528 (0.104, 2.366)
<i>OPENNESS</i>	0.809 (-0.096, 0.964)	0.146 (-0.189, 0.321)	-0.095 (-0.401, 0.314)	0.218 (-0.165, 0.347)	0.157 (-0.061, 0.204)
<i>POLITY</i>	0.093 (0.066, 0.272)	0.098 (0.081, 0.119)	0.083 (0.070, 0.111)	0.063 (0.036, 0.094)	0.031 (-0.039, 0.052)
<i>ETHNIC</i>	-1.331 (-2.016, 0.107)	-0.459 (-1.000, 0.328)	-0.083 (-0.582, 0.288)	-0.148 (-0.233, 0.209)	-0.389 (-0.703, 0.438)
<i>AFRICA</i>	0.224 (-1.798, 0.493)	0.587 (-0.980, 0.866)	0.251 (0.011, 0.550)	0.024 (-0.297, 0.419)	-0.440 (-0.791, 1.798)

^a According to Figure 3, confidence bands (90%) are in parentheses. They are computed using the rank method, suitable for samples with less than 1,000 observations (see Koenker, 1994). In bold are those bands not including the zero —i.e the estimated coefficient (also in bold) is significant for this quantile.

TABLE 8: Determinants of per capita GDP: quantile regression (Model 4)

Covariates	Dependent variable: <i>GDPPC</i> (in logs)				
	Quantile (τ)				
	$\tau = 0.05^a$	$\tau = 0.25^a$	$\tau = 0.50^a$	$\tau = 0.75^a$	$\tau = 0.95^a$
<i>(Intercept)</i>	6.053 (3.115, 9.753)	6.198 (5.585, 7.868)	6.767 (6.058, 7.323)	7.557 (6.815, 8.381)	6.346 (5.675, 10.398)
<i>GWORK</i>	-14.992 (-27.728, 9.020)	-5.511 (-13.151, 2.210)	0.215 (-10.892, 4.335)	-2.270 (-11.523, 9.307)	22.045 (-18.227, 29.872)
<i>TRUST</i>	1.955 (-1.496, 3.788)	1.936 (1.058, 2.070)	1.414 (1.149, 1.878)	0.874 (0.637, 1.871)	2.222 (0.369, 3.184)
<i>IGDP</i>	4.064 (2.196, 5.265)	3.998 (2.872, 4.813)	2.806 (2.101, 4.697)	3.371 (1.965, 4.665)	2.972 (-1.005, 7.395)
<i>HK</i>	-0.057 (-1.611, 0.9920)	0.249 (-0.141, 0.824)	0.406 (-0.502, 0.719)	0.352 (-0.697, 1.048)	1.030 (-1.056, 2.812)
<i>OPENNESS</i>	0.931 (-0.316, 0.955)	0.061 (-0.191, 0.419)	-0.130 (-0.384, 0.338)	0.224 (-0.252, 0.335)	0.149 (-0.155, 0.238)
<i>POLITY</i>	0.095 (0.041, 0.292)	0.095 (0.081, 0.110)	0.087 (0.063, 0.111)	0.056 (0.040, 0.096)	0.031 (-0.054, 0.060)
<i>ETHNIC</i>	-1.186 (-2.182, 1.124)	-0.119 (-1.021, 0.161)	-0.161 (-0.640, 0.273)	-0.092 (-0.344, 0.353)	-0.086 (-0.702, 0.272)
<i>AFRICA</i>	0.477 (-1.798, 0.815)	0.552 (-1.122, 0.813)	0.137 (-0.011, 0.496)	-0.065 (-0.307, 0.455)	-0.710 (-1.096, 1.798)

^a According to Figure 3, confidence bands (90%) are in parentheses. They are computed using the rank method, suitable for samples with less than 1,000 observations (see Koenker, 1994). In bold are those bands not including the zero—i.e the estimated coefficient (also in bold) is significant for this quantile.

FIGURE 3: Regression quantiles for *TRUST*

Note: The slopes for *TRUST*, estimated by quantile regression for the different models, are plotted as a function of the different quantiles (percentiles from 1 to 99), represented in the horizontal axis. The vertical axis represents the values of the estimated coefficients for each quantile, and the red solid line corresponds to the *TRUST* coefficient of the OLS estimation. The dashed lines in red correspond to 90% confidence bands for the OLS estimation, whereas those for the quantile estimation are represented by the shaded area. In those areas where the confidence bands contain the zero, the estimated coefficient is non-significant.

These are interesting results considering previous arguments in the trust literature. Knack and Keefer (1997) suggested that trust effects should be stronger for poorer countries. They held that those countries are characterized by both weak institutions and poor legal frameworks, and trust may become an informal framework to guarantee transactions. Shortly after, Zak and Knack (2001) introduced a new concept, the *low-trust poverty trap*. They argued that poor countries with a lower stock of trust, despite the presumption of the neoclassical growth

model of higher returns to capital and potential faster growth¹⁶, may not make the most of their backward situation. However, poor countries where trust is sufficiently high would take advantage of that backwardness and, therefore, trust would become the *lubricant* for development. According to our results, this argument does not hold, since for the poorest countries *TRUST* is non-significant, and therefore the level of trust that they actually have is not relevant.

TABLE 9: ANOVA tests for the equality of the slope coefficients for different quantiles (τ)

	Model 1	Model 2	Model 3	Model 4
F-statistic	5.020	5.387	7.696	6.281
p-value	0.001	0.000	0.000	0.000

* The null hypothesis being tested is whether the slope coefficients for *TRUST* for the different τ are equal ($H_0 : \beta_{\tau=0.05} = \beta_{\tau=0.25} = \beta_{\tau=0.50} = \beta_{\tau=0.75} = \beta_{\tau=0.95}$).

Rothstein and Uslaner (2005) dug more deeply in this line of research and evaluated the causes of what they called the *social trap*. They suggested that the poorest countries – are normally characterized by high levels of income inequality and dysfunctional institutions, and that has a pernicious effect on trust. If institutions are expected to establish policies in order to mitigate inequality, but trust is low, then these policies cannot be properly established. If policies are not appropriately applied, then this also negatively affects trust and therefore, “poor and inegalitarian countries find themselves trapped in a situation of continuing inequality, mistrust and dysfunctional institutions” (Rothstein and Uslaner 2005, p.71). Additional support is given by Bjørnskov (2007) and Fairbrother and Martin (2013), who find that income inequality is one of the factors destroying social trust. Partially linked to these assertions, Ahlerup et al. (2009) argued that the positive effect of trust at the same time dilutes the tendency for institutions to become stronger and more reliable for guaranteeing economic transactions. Therefore, trust would be less relevant for richer countries, which are precisely those benefiting from stronger institutional frameworks. Additional evidence on this point is reported in Bjørnskov and Méon (2013). When institutional quality is introduced in their models, trust is no longer a good predictor of income, which would imply that institutions are a good substitute for trust.

¹⁶ This is a central point in the convergence literature. The production factors show diminishing returns, and therefore the poorer economies generally grow faster than the richer ones. See Barro and Sala-i-Martin (1992) for an excellent discussion.

The pattern shown by *TRUST* in our results by quantile might support the above arguments. On the one hand, they evidence the existence of the social trap, since trust is non-significant for the poorest countries. In these countries, an increase in the level of trust will not yield any positive effect on income. On the other hand, they lend support to the argument that for countries with a better institutional framework and less inequality, which are relatively richer, trust is less relevant for income per capita. Therefore, once a country succeeds in escaping from the social trap, income might enjoy the maximum contribution from trust, since the institutions still cannot guarantee transactions. During the development process, institutions tend to reinforce, transactions become securer and trust loses importance.

Tables 5, 6, 7 and 8 also report the results for the rest of variables included as controls. The growth of population (*GWORK*) is significant for the relatively poor countries in model 2, while the investment variable (*IGDP*) remains highly significant, regardless of the model. Human capital (*HK*), seems to be relevant only for the relatively richer countries in model 2, and exclusively for the richest in model 3. The degree of trade openness (*OPENNESS*) and the degree of ethnic fractionalization (*ETHNIC*), show the expected positive and negative sign respectively, but are no longer significant. The variable capturing government quality (*POLITY*) is positive and highly significant across quantiles and specifications and, finally, the dummy variable for African countries (*AFRICA*) is non-significant.

6. Concluding Remarks

MOST of the studies evaluating the role of trust on economic development concluded that trust influences economic development, following both direct and indirect channels. Yet in the great majority of cases scholars have generalized the outcomes of trust, neglecting that trust might affect income with different intensity depending on the level of development of the country, and therefore showing heterogeneous effects and non-linearities.

This study contributes to the literature in two different aspects. Firstly, it expands Dearmon and Grier's (2009) sample, one of the widest in this particular context, with 89 additional observations and also considering the most recent data on trust from the WVS (2005-2007). And secondly, the analysis is performed using both OLS and quantile regression. Whereas the first approach corroborates previous findings in the literature —i.e. trust is one of the drivers of

economic development, the second has allowed us to evaluate with some precision non-linear impacts of trust across the conditional quantiles of income, casting considerable doubts on the generalization of trust effects.

In particular, the quantile regression estimations indicate that trust is not relevant for the poorest countries and also shows a decreasing pattern, predicting diminishing returns for trust as an economy becomes richer. These results are particularly robust to different model specification, where additional controls are included sequentially. This intriguing result suggests the existence of a *social trap* for the poorest economies, and would corroborate previous arguments by Rothstein and Uslaner (2005), Bjørnskov (2007), Ahlerup et al. (2009) and Fairbrother and Martin (2013), focused on the role played by the institutional framework as well as income inequality.

Our findings have some policy implications. Previous contributions argued that trust affects income. However, according to our results, efforts to increase trust levels in the poorest economies might not be the best strategy. It may be more appropriate for efforts to focus on reducing inequality as well as making the institutions stronger and more reliable. Unfortunately, this is not an easy task, especially in those poorest economies frequently governed by unstable and corrupt governments. In addition, these countries also tend to present internal tensions that further complicate the task of implementing policies to escape from the social trap. However, the evidence found in recent years, to which this study aims to contribute, points in that direction.

In summary, this study provides evidence to further understanding of the effect of trust on income for different levels of development. Nevertheless, while it sheds light on such an important and still unexplored question on this issue, new evidence is needed in other fronts that are in the future research agenda. Among them, perhaps the most relevant are, first, a full understanding of what is exactly behind the social trap, and second, what actually are the mechanisms in the power of governments and international organizations in order to promote more egalitarian economies and reverse these scenarios.

In addition, one limitation related to the implicitly assumed exogeneity of trust. In case such an assumption were not plausible, one might consider the application of some recently developed techniques which combine quantile regression and instrumental variables, among which we might highlight the contributions by Chernozhukov and Hansen (2006), Chernozhukov et al. (2007), or Harding and Lamarche (2009), who have been attempting to fill this gap and, therefore, the immediate research agenda will deal with applying them in our particular context.

7. References

- AHLERUP, P., OLSSON, O. and D. YANAGIZAWA (2009): “Social capital vs. institutions in the growth process”. *European Journal of Political Economy* 25 (1), 1-14.
- AKÇOMAK, I. and B. TER WEEL (2009): “Social capital, innovation and growth: evidence from Europe”. *European Economic Review* 53 (5), 544-567.
- ARROW, K. J. (1972): “Gifts and exchanges”. *Philosophy & Public Affairs* 1 (4), 343-362.
- BARRETO, R. and A. HUGHES (2004): “Under performers and over achievers: a quantile regression analysis of growth”. *Economic Record* 80 (248), 17-35.
- BARRO, R. and X. SALA-I-MARTIN (1992): “Convergence”. *Journal of Political Economy* 100 (2), 223-251.
- (1995): *Economic Growth*. New York: McGraw Hill.
- BARRODALE, I. and F. ROBERTS (1974): “Solution of an overdetermined system of equations in the l_1 norm [f4]”. *Communications of the ACM* 17 (6), 319-320.
- BEUGELSDIJK, S., DE GROOT, H.L. and A.B. VAN SCHAİK (2004): “Trust and economic growth: a robustness analysis”. *Oxford Economic Papers* 56 (1), 118-134.
- BEUGELSDIJK, S. and T. VAN SCHAİK (2005): “Social capital and growth in European regions: an empirical test”. *European Journal of Political Economy* 21 (2), 301-324.
- BJØRNSKOV, C. (2006): “The multiple facets of social capital”. *European Journal of Political Economy* 22 (1), 22-40.
- (2007): “Determinants of generalized trust: a cross-country comparison”. *Public Choice* 130 (1-2), 1-21.
- (2012): “How does social trust affect economic growth?”. *Southern Economic Journal* 78(4), 1346-1368.
- BJØRNSKOV, C. and P.G. MÉON,(2013): “Is trust the missing root of institutions, education, and development?”. *Public Choice*, forthcoming.
- (2009): “Social trust and the growth of schooling”. *Economics of Education Review* 28 (2), 249-257.
- BROCK, W.A. and S.N. DURLAUF (2001): “What have we learned from a decade of empirical research on growth? Growth empirics and reality”. *World Bank Economic Review* 15 (2), 229-272.
- CADE, B.S. and B.R. NOON (2003): “A gentle introduction to quantile regression for ecologists”. *Frontiers in Ecology and the Environment* 1 (8), 412-420.
- CAMERON, A.C. and P.K. TRIVEDI (2009): *Microeconometrics Using Stata*. Volume 5, College Station, Texas: Stata Press.

- CHERNOZHUKOV, V. and C. HANSEN (2006): “Instrumental quantile regression inference for structural and treatment effect models”. *Journal of Econometrics* 132 (2), 491-525.
- CHERNOZHUKOV, V., G.W. IMBENS and W.K. NEWEY (2007): “Instrumental variable estimation of nonseparable models”. *Journal of Econometrics* 139 (1), 4-14.
- COAD, A. and R. RAO (2008): “Innovation and firm growth in high-tech sectors: a quantile regression approach”. *Research Policy* 37 (4), 633-648.
- CRESPO CUARESMA, J.C., N. FOSTER and R. STEHRER (2011): “Determinants of regional economic growth by quantile”. *Regional Studies* 45 (6), 809-826.
- DEARMON, J. and K. GRIER (2009): “Trust and development”. *Journal of Economic Behavior & Organization* 71 (2), 210-220.
- (2011): “Trust and the accumulation of physical & human capital”. *European Journal of Political Economy* 27 (3): 507-519.
- DOH, S. and C. McNEELY (2011): “A multi-dimensional perspective on social capital and economic development: an exploratory analysis”. *The Annals of Regional Science* 49 (3), 821-843.
- DOORNIK, J.A. and H. HANSEN (2008): “An omnibus test for univariate and multivariate normality”. *Oxford Bulletin of Economics and Statistics* 70 (S1), 927-939.
- DURLAUF, S.N. (2002): “On the empirics of social capital”. *Economic Journal* 112 (483), 459-479.
- DURLAUF, S.N. and M. FAFCHAMPS (2005): “Social capital”. In P. Aghion and S.N. Durlauf, eds. *Handbook of Economic Growth*. Volume 1B, chapter 26, Amsterdam: North-Holland, 1639-1699.
- FAIRBROTHER, M. and I.W. MARTIN (2013): “Does inequality erode social trust? Results from multilevel models of US states and counties”. *Social Science Research* 42 (2), 347-360.
- FREITAG, M. and P.C. BAUER (2013): “Testing for measurement equivalence in surveys dimensions of social trust across cultural contexts”. *Public Opinion Quarterly* 77 (S1), 24-44.
- GUISO, L., P. SAPIENZA and L. ZINGALES (2004): “The role of social capital in financial development”. *American Economic Review* 94 (3), 526-556.
- (2009): “Cultural biases in economic exchange?” *The Quarterly Journal of Economics* 124 (3), 1095-1131.
- HARDING, M. and C. LAMARCHE (2009): “A quantile regression approach for estimating panel data models using instrumental variables”. *Economics Letters* 104 (3), 133-135.
- HENDERSON, D.J., C. PAPAGEORGIOU and C.F. PARMETER (2011): “Growth empirics without parameters”. *Economic Journal* 122 (559), 125-154.
- HORVATH, R. (2012): “Does trust promote growth?” *Journal of Comparative Economics* (available online at <http://dx.doi.org/10.1016/j.jce.2012.10.006>).
- ISLAM, N. (1995): “Growth empirics: a panel data approach.” *Quarterly Journal of Economics* 110 (4), 1127-1170.

- KNACK, S. (2002): "Social capital and the quality of government: evidence from the States." *American Journal of Political Science* 46 (4), 772-785.
- KNACK, S. and P. KEEFER (1997): "Does social capital have an economic payoff? A cross country investigation." *Quarterly Journal of Economics* 112 (4), 1251-1288.
- KOENKER, R. (1994): "Confidence intervals for regression quantiles." In P. Mandl and M. Huskova, eds. *Asymptotic Statistics*. Berlin-Heidelberg: Springer, 349-359.
- (2005): *Quantile Regression*. New York: Cambridge University Press.
- KOENKER, R. and G. BASSETT (1978): "Regression quantiles." *Econometrica* 46 (1), 33-50.
- KOENKER, R. and K.F. HALLOCK (2001): "Quantile regression." *Journal of Economic Perspectives* 15 (4), 143-156.
- KOENKER, R.W. and V. D'OREY (1987): "Computing regression quantiles." *Journal of the Royal Statistical Society. Applied Statistics* 36 (3), 383-393.
- MALONEY, W.F., W.V. CUNNINGHAM and M. BOSCH (2004): "The distribution of income shocks during crises: an application of quantile analysis to Mexico, 1992-95." *World Bank Economic Review* 18 (2), 155-174.
- MANKIW, N., D. ROMER, and D. WEIL (1992): "A contribution to the empirics of economic growth." *Quarterly Journal of Economics* 107 (2), 407-437.
- MELLO, M. and R. PERRELLI (2003): "Growth equations: a quantile regression exploration." *Quarterly Review of Economics and Finance* 43 (4), 643-667.
- MIGUÉLEZ, E., R. MORENO and M. ARTÍS (2011): "Does social capital reinforce technological inputs in the creation of knowledge? Evidence from the Spanish regions." *Regional Studies* 45 (8), 1019-1038.
- OSBORNE, E. (2006): "The sources of growth at different stages of development." *Contemporary Economic Policy* 24 (4), 536-547.
- PUTNAM, R. (1993): *Making Democracy Work: Civic Traditions in Modern Italy*. New Jersey: Princeton University Press.
- ROTHSTEIN, B. and E.M. USLANER (2005): "All for all: equality, corruption, and social trust." *World Politics* 58 (1), 41-72.
- SEN, A.K. (1977): "Rational fools: a critique of the behavioral foundations of economic theory." *Philosophy & Public Affairs* 6 (4), 317-344.
- SHAPIRO, S. and M. WILK (1965): "An analysis of variance test for normality (complete samples)." *Biometrika* 52 (3/4), 591-611.
- SHEATHER, S.J. and M.C. JONES (1991): "A reliable data-based bandwidth selection method for kernel density estimation." *Journal of the Royal Statistical Society Ser.B*, 53 (3), 683-690.

- SOLOW, R. (1957): “Technical change and the aggregate production function.” *The Review of Economics and Statistics* 39 (3), 312-320.
- TEORELL, J., M. SAMANNI, S. HOLMBERG and B. ROTHSTEIN (2011): *The Quality of Government Dataset*. University of Gothenburg. Available online at <http://www.qog.pol.gu.se>.
- USLANER, E. (2002): *The Moral Foundations of Trust*. Cambridge: Cambridge University Press.
- WHITELEY, P. (2000): “Economic growth and social capital.” *Political Studies* 48 (3), 443-466.
- YAMAMURA, E. (2012): “Social capital, household income, and preferences for income redistribution.” *European Journal of Political Economy* 28 (4), 498-511.
- ZAK, P.J. and S. KNACK (2001): “Trust and growth.” *Economic Journal* 111 (470), 295-321.

NOTA SOBRE LOS AUTORES - ABOUT THE AUTHORS*

JESÚS PEIRÓ-PALOMINO graduated in organization and business administration from the Jaume I University and received the award of the Confederación de Empresarios de Castellón in recognition for his academic career. He also obtained a PhD scholarship from the Valencian Government VALi+d 2011 program. He is currently a postgraduate student of the Master in Economic Internationalization, speciality in economic integration and, also, a member of the Department of Economics at Jaume I University, where he is working on his PhD thesis, focused on how social features in societies, commonly known as social capital, affect their economic development. He has participated in different national congresses.

E-mail: peiroj@uji.es

EMILI TORTOSA-AUSINA graduated in economics from the University of Valencia and holds a PhD in economics from the Jaume I University, where he is currently a lecturer in applied economics. He has also taught at the University of Alicante (1994-1995) and has received scholarships from various institutions (Fundación Caja Madrid, among others). He has held posts as visiting researcher at the Autonomous University of Barcelona, the University of New South Wales (Australia), and the Department of Economics of Oregon State University (USA). His specialized fields are banking economics and the analysis of productivity and efficiency, application of different techniques and the problems in the banking sector. He has published various books in collaboration with others and his articles have appeared in specialized journals. He has participated in many Spanish and international congresses and is main researcher on the Spanish National Research Program *Evaluación de la eficiencia y la productividad de las organizaciones en un contexto de crisis económica: instituciones financieras y sector public*.

E-mail: tortosa@uji.es

Any comments on the contents of this paper can be addressed to Emili Tortosa-Ausina, Departament d'Economia, Universitat Jaume I, Campus del Riu Sec, 12071 Castelló de la Plana, Spain. Tel.: +34 964387168, fax: +34 964728591, e-mail: tortosa@uji.es.

* We thank Fabio Pieri, Pierre-Alexandre Balland and other participants in the conference "IX Jornadas de Integración Económica INTECO" (Valencia, Spain, November 2012), the research seminar "Creativity, networks and clusters: Learning from interactions" (Castellón, Spain, November 2012), and the XXXVII Simposio de la Asociación Española de Economía (Spanish Economic Association Annual Meeting, Vigo, Spain, December 2012) for helpful comments. We are especially thankful to two anonymous referees, whose comments have contributed to the overall improvement of the article. The financial support of the Ministerio de Ciencia e Innovación (ECO2011-27227) and Generalitat Valenciana (VALi+d ACIF/2011 and PROMETEO/2009/066) is also gratefully acknowledged. The usual disclaimer applies.

ÚLTIMOS NÚMEROS PUBLICADOS – RECENT PAPERS

- DT 03/13 *A Bayesian Perspective to Analyze Branch Location Patterns in Spanish Banking*
Luisa Alamá Sabater, David Conesa Guillén, Anabel Forte Deltell y Emili Tortosa-Ausina
- DT 02/13 *Áreas rurales y coberturas del suelo*
Francisco J. Goerlich Gisbert
- DT 01/13 *The Weight of the Crisis: Evidence from Newborns in Argentina*
Carlos G. Bozzoli y Climent Quintana-Domeque
- DT 16/12 *Productivity and Deregulation in European Railways*
Pedro Cantos Sánchez, José Manuel Pastor Monsálvez y Lorenzo Serrano Martínez
- DT 15/12 *An Equity-based Proposal for the Evaluation of Health States*
Carmen Herrero Blanco y Antonio Villar Notario
- DT 14/12 *Social Capital, Investment and Economic Growth: Evidence for Spanish Provinces*
Emili Tortosa-Ausina y Jesús Peiró Palomino
- DT 13/12 *Esperanza de vida y causas de muerte: Un análisis de descomposición (1975-2009)*
Francisco J. Goerlich Gisbert
- DT 12/12 *Impact of the Subprime Crisis on Bank Ratings: The Effect of the Hardening of Rating Policies and Worsening of Solvency*
Carlos Salvador Muñoz, José Manuel Pastor Monsálvez y Juan Fernández de Guevara Radoselovics
- DT 11/12 *A Multilevel Decomposition of School Performance Using Robust Nonparametric Frontier Techniques*
Claudio Thieme, Diego Prior y Emili Tortosa-Ausina
- DT 10/12 *El transporte ferroviario de alta velocidad: Una visión económica*
Francisco Javier Campos Méndez, Ginés De Rus Mendoza e Ignacio M. Barrón de Angoití
- DT 09/12 *Trade Integration in the European Union: Relative Contributions of Openness and Interconnectedness*
Iván Arribas Fernández, Francisco Pérez García y Emili Tortosa-Ausina
- DT 08/12 *Life Potential as a Basic Demographic Indicator*
Francisco J. Goerlich Gisbert y Ángel Soler Guillén
- DT 07/12 *Unpaid Work, Time Use Surveys, and Care Demand Forecasting in Latin America*
María Ángeles Durán y Vivian Milosavljevic

Fundación **BBVA**

Plaza de San Nicolás, 4
48005 Bilbao
España
Tel.: +34 94 487 52 52
Fax: +34 94 424 46 21

Paseo de Recoletos, 10
28001 Madrid
España
Tel.: +34 91 374 54 00
Fax: +34 91 374 85 22
publicaciones@bbva.es
www.bbva.es